

Summer 2008/www.meridiancc.edu

For friends of MCC

MERIDIAN COMMUNITY COLLEGE

Connections

M A G A Z I N E



WHERE ARE? WE NOW?

Dr. Scott Elliott, *president*

Barbara Jones, *vice president, operations*

Pam Harrison, *vice president, finance*

Dr. Kathy Baxter, *associate vice president,
research, development and governmental
affairs*

Shirley Nell Goodman, *associate vice
president, workforce development*

Soraya Welden, *dean, student services*

Michael Thompson, *associate dean,
academic affairs*

Dr. Richie McAlister, *dean, occupational
education*

Billy Beal, *dean, learning resources*

Janet Heggie, *dean, community and
business development*

Kathy Brookshire, *director, institutional
advancement*

Connections is published by the MCC College
Promotions and Public Relations Department.

Kay Thomas, *public relations director*

Amy Miller, *graphic designer*

Daniel Ethridge, *graphic designer and webmaster*

*On the cover: Tanya Thompson and Kathy
Brookshire, MCC Foundation travel guides
say, "Aloha" from a sugar cane field in Maui,
Hawaii.*

Meridian Community College does not discriminate on the basis
of race, color, national origin, sex, disability, religion or age
in admission or access to, or treatment or employment in its
programs and activities. Compliance with Section 504 and Title
IX is coordinated by Soraya Welden, dean of student services, 910
Highway 19 North, Meridian, Mississippi 39307. 1.601.484.8628
Fax: 1.601.484.8635. Email: swelden@meridiancc.edu.

MERIDIA
COMMUNITY COLLEGE

CONTENTS

- 4 GAINES CRAWFORD *traveling through life with enthusiasm*
- 11 LOCAL ATTORNEYS GIVE TO TUITION GUARANTEE
- 12 CEFCO BEGINS ENDOWMENT AT MCC
- 13 EXCHANGE CLUB SCHOLAR
- 14 TRUSTMARK, FOUNDATION - PARTNER FOR ONE-OF-A-KIND AGREEMENT
- 15 2008-09 ARTS & LETTERS SEASON LINE-UP



5 WHERE ARE WE NOW?

*From shopping trips
to a far-away land.
See where MCC
Foundation Travel
can take you.*

6 MEET THE NEW FOUNDATION BOARD MEMBERS AND OFFICERS

10 KIMBRELL RUFFER - ROOTS RUN DEEP

*See how this local
business has grown into
a family tradition.*

2008-2009
Arts & Letters Series
 MERIDIAN COMMUNITY COLLEGE

Fall 2008



Puss in Boots

Thurs., Sept. 18
 7 p.m.



CARNIVAL!

MCC Fine Arts Department

Thurs. - Sat.
 Oct. 23-25 • 7 p.m.
 Sun. Oct. 26 • 2 p.m.

Paul McKee & the
 MCC Jazz Band

Thurs., Nov. 13
 7 p.m.



MCC Chorus
 Fall Semester Concert

Tues., Dec. 2
 7 p.m.

celtic
CROSSROADS



Thurs., Jan. 29
 7 p.m.



**A Couple of
 Blaguards**

Thurs., March 12
 7 p.m.

MCC Community Band

Sun., April 5
 3 p.m.



TRACK 45

Tues., April 21
 7 p.m.

MCC Chorus
 Spring Semester
 Concert

Tues., May 5
 7 p.m.



Spring 2009



THE SPENCERS

theatre of illusion

Tues., Feb. 10 • 7 p.m.

**MERIDIAN
 COMMUNITY COLLEGE**

1.800.MCC.THE.1 • www.meridiancc.edu

*All events will be held in the McCain Theater, Ivy Hall.
 For more information visit us on the web at
www.meridiancc.edu/artsletters or call 601.484.8696.*

Meridian Community College does not discriminate on the basis of race, color, national origin, sex, disability, religion or age in admission or access to, or treatment or employment in its programs and activities. Compliance with Section 504 and Title IX is coordinated by Soraya Welden, dean of student services, 910 Highway 19 North, Meridian, Mississippi 39307. 1.601.484.8628 Fax: 1.601.484.8635. Email: swelden@meridiancc.edu.

Optimist Club members complete endowment

Members of the Downtown Optimist Club of Meridian may have changed their venue for their latest meeting, but there was a reason for meeting at Meridian Community College.

The club presented its last payment to fully endow the Bill Herndon Memorial Scholarship at MCC to Kathy Brookshire, director of institutional development, in the campus' G.V. "Sonny" Montgomery Hall. Herndon and the late Rep. Montgomery were longtime Downtown Optimist Club members as well as friends.

"We are very excited about this," said Brookshire as she received the check. "We will be very good stewards of your endowment."

Herndon was a Meridian businessman in the insurance industry who was also very active in the organization whose motto is "friend of youth."

Members of the organization will meet with college officials to determine the specific criteria for the scholarship. According to the organization, "Optimist Clubs see a need in their community and react to it." ■

Members of the Downtown Optimist Club of Meridian mark the day of completing the Bill Herndon Memorial Scholarship with a group photo.



Trustmark, Foundation - partner for one-of-a-kind agreement

Meridian Community College's Tuition Guarantee Program received a first of its kind endowment.

The Meridian Community College Foundation, which underwrites the Tuition Guarantee, announced the receipt of the T. H. and Allie R. Hobgood

Educational Trust assets from Trustmark National Bank – Meridian.

"MCC is so pleased to receive this trust from Trustmark National Bank. This endowed fund will be designated for the Tuition Guarantee Program. What a wonderful way to continue the legacy of the Hobgood Family. The Meridian

Community College Foundation is grateful that Trustmark recognizes the importance of the Tuition Guarantee Program for Lauderdale County," said Kathy Brookshire.

Trustmark National Bank – Meridian and its predecessor banks in Meridian have served as

Continued on back page.

Robby Dreyfus, Meridian attorney; Scott Carmichael, president of Trustmark National Bank – Meridian; Robert Ford, trust officer at Trustmark National Bank –Meridian; Kathy Brookshire, MCC director of institutional advancement; and Dr. Scott Elliott, president of Meridian Community College with the check from the T. H. and Allie R. Hobgood Educational Trust assets from Trustmark National Bank – Meridian.





Economic perpetual motion

FROM THE PRESIDENT

I am by no stretch of the imagination an economist. I've never run a private sector business like Structural Steel or Peavey Electronics, nor have I managed an economic development agency like the EMBDC.

I can only speak to economic development from what I believe to be a common sense perspective - although my lovely wife, Claudia, might seriously doubt my qualifications even on that basis.

Anyway, here are some fundamentals that I have observed:

- In a climate of rising gas and grocery prices, failing financial institutions, and epidemic mortgage foreclosures, few are excited about having their taxes raised, even if it benefits some vital public services.
- Mustering the revenue needed to produce quality public services is, therefore, a constant struggle.
- Those things being the case, a broader tax base would seem the solution.
- The only way to broaden a tax base is for more of our region's citizenry to land good paying jobs.
- Good paying jobs result from existing industry increasing its business and/or new industry being successfully recruited to one's community.
- Existing industry can't increase its business nor can new industry be recruited unless business owners are assured that well-trained workers are available for hire.
- Well-trained workers are generally produced by America's community colleges.
- Community colleges can't produce well-trained workers if they don't have the funding to hire faculty, purchase program equipment and supplies, and establish instructional spaces.

That's Economics 101, Elliott style. The cycle I've tried to describe above requires front-end investment that will ultimately produce a much greater return. In a perfect world, an equalization would occur in terms of taxes that would support ongoing quality services for a community. One might call that economic perpetual motion.

Here's a real life example. A young adult enrolls at Meridian Community College with either a minimum wage job or perhaps

no job. That person is accepted into MCC's Commercial Truck Driving program and goes through a 16-week training program, exiting with a commercial driving license (CDL) as well as internship experience with a local company. The graduate gets a job at a local company and makes \$60,000 annually within two years of initial employment.

Now, to me, that's economic development, and you don't have to hold a MBA to understand it.

Those kinds of success stories can be witnessed at MCC every year. And that's why the college recently asked the Lauderdale County Board of Supervisors for \$520,000 in new support for our Workforce Training Center under development. We want to take training at MCC to the next level, turning out more and more well-trained workers to help build the economy of our community and region. Although the Supervisors approved only \$250,000 for the project, the college is nevertheless grateful for their support.

Having said that, we all need to understand the aforementioned equation that is investment and return. It's going to take some money on the front end to produce a lot more on the back. Moreover, developing a viable workforce is not a one-year proposition. It's an every year challenge.

Yes, times are tough. No question about it. But times might get a lot tougher for any community across America that lacks the vision to deliver contemporary work skills to its citizenry. Remember that 65 percent of all jobs across our nation today require some kind of advanced skills training - the kind offered by America's community colleges. The days in Mississippi when one could get a job in a garment or furniture plant absent a high school diploma or some college are gone. Long gone, like to Mexico and China.

So, with all due respect to our northern neighbor Tupelo, I'm getting tired of hearing about the "Tupelo Story." I'm ready to start hearing about the "Meridian Story." Without question, a well-trained workforce is fundamental to that story becoming a reality. ■

Scott Elliott
--SCOTT ELLIOTT

GAINES CRAWFORD

Member of MCC Foundation
traveling through life with enthusiasm

Whether it's a one night stay in Gulf Shores, Ala., or a 10-day tour of the Grecian Islands, Corrigan Travel Agency treats customers as friends.

"The neatest thing to me as a business man is having developed wonderful friendships," said Gaines Crawford, owner and president of Corrigan Travel Agency. He finds that being a partner with his clients means providing a service that fits the client with the travel.

In this day of Internet searches with Expedia or Travelocity, there's a tendency to think a better value can be found in cyber space. "The Internet is a great place to look at photos and read about events," Crawford said. But when it comes to the personal service, travelers look to Corrigan. Crawford tells the story about a client who was in Vancouver, British Columbia, Canada, trying to get a flight.

The day was Sept. 11, 2001.

Crawford explained the situation about all flights being canceled. However, Crawford was able to redirect him – and the 25 other people who were in the same predicament.

Although he counts on his suppliers, Crawford said he still puts his clients on the top of the list. "I'm going to go with the better value."

And after 20 years in the business, Crawford said "I'm still excited about doing this."

Corrigan Travel Agency started in Meridian in 1932 with Lucille Corrigan, the wife of a railroad man, who would

make train tickets up for people traveling in and out of the East Central Mississippi railroad hub. The train companies would pay Corrigan for her efforts.

The company grew and would become the name in travel for the area. Crawford explained even his grandparents would use Corrigan Travel Agency, for he discovered a cruise document from his grandparents' trip in the 1960s with the company's name.

Today, the agency has offices in Jackson, Bay St. Louis and Mobile, and serves corporate accounts as well as individuals. Crawford said the company builds profiles on clients so they can provide optimal and personal services. "Most of those (individuals) out there who are travel savvy use an agency," he said.

Whether it's making dinner reservations, a hot Broadway musical or a couple's massage, anything in which a ticket can be made, Crawford Travel Agency can help. ■



Steven and Brenda Lockey, members of the MCC Foundation President's Roundtable, recently had the Grand Opening of their new grocery store, Pilgrim's Foodliner in DeKalb. Congratulations Steven and Brenda.



Mississippi Power supports Tuition Guarantee

David Buckner, right, Division Manager, Mississippi Power Company, presents a \$7,500 check to Kathy Brookshire, director of institutional advancement, and Dr. Scott Elliott, president of MCC, in support of the Tuition Guarantee Program.

Exchange Club Scholar

MCC student Ashley Day was thankful and gracious when she expressed her gratitude to members of the Exchange Club.

The Exchange Club Bo Russell Scholarship, which covers books and tuition, will help Day reach her goal in pursuing a degree in the medical field. The club held its meeting at MCC's banquet room with the Foundation serving as host.

"I want to thank all of you," the West Lauderdale high school graduate said.

Exchange is an all-volunteer, national service organization for men and women who want to serve their community, develop leadership skills and enjoy new friendships. Exchange is made up of nearly 800 clubs and more than 25,000 members throughout the United States and Puerto Rico. ■



Surrounded by Exchange Club members, Ashley Day is all smiles upon receiving scholarship.

Meet the youngest members of the MCC Foundation



Kathy Brookshire, executive director of the MCC Foundation, had an unexpected visit from sisters, Regan and McKenzie Welden. The purpose of their visit: They wanted to become members of the MCC Foundation. Both girls plan to attend MCC when they graduate from high school. They wanted to help support Tuition Guarantee. They are the daughters of Soraya Welden, dean of Student Services. Pictured are: McKenzie, age 6, and Reagan, age 9, youngest members of the foundation, making their donation.

CEFCO begins endowment at MCC

Thanks to the efforts of CEFCO Convenience Stores and local and area golfers, students at Meridian Community College will be getting a financial helping hand.

A \$10,000 check was presented to College representatives Gerry Purvis, president of the MCC Foundation, and Diane Delk, Foundation accountant, after the conclusion of the CEFCO Charity Classic held June 23 at Briarwood Country Club. The money was earmarked for the C.E. Fikes (CEFCO) Endowment at MCC.

The endowed scholarship is named in honor of C.E. Fikes, a native of Cameron, Texas, and the founder of Fikes Wholesale Inc., the holding company for CEFCO Convenience Stores, Fleet Fuel, Sunbelt Ice, CORD Financial Services and Group Petroleum Services.

Though this was the seventh year for the corporation to host a fund-raising golf tournament, it was the inaugural tournament in Mississippi. "We talked to the vendor community here, listened to people and asked

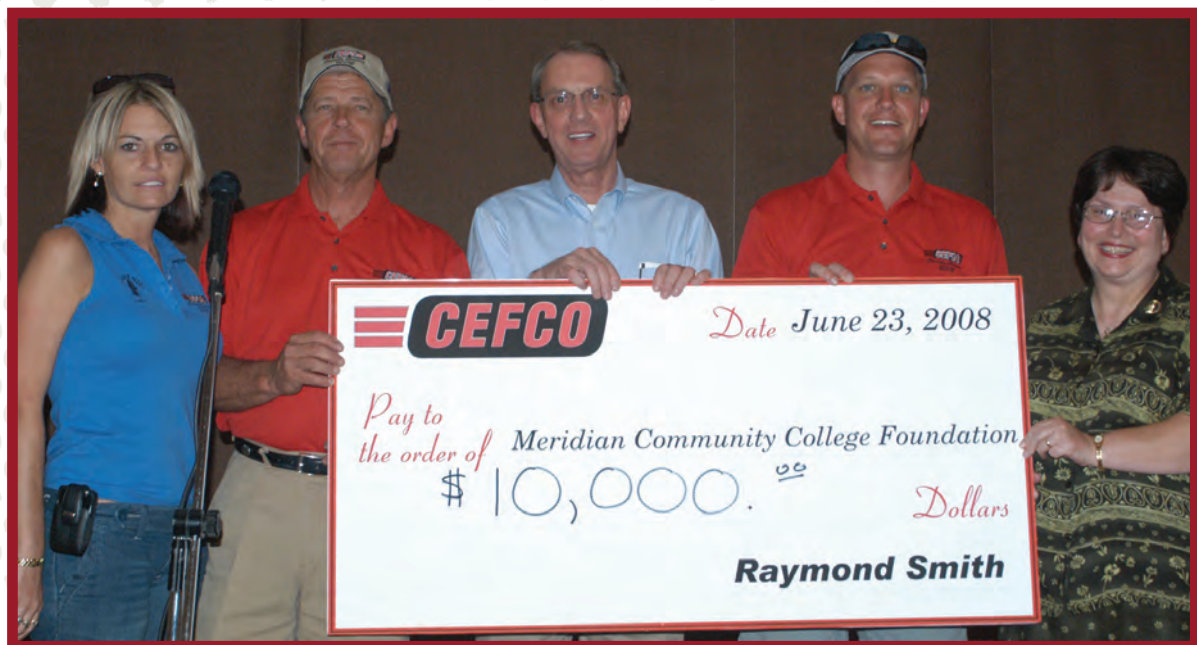
for advice," said Dennis Kelley, vice president of marketing for CEFCO. "We want to be involved in the right thing," he added.

CEFCO Convenience Stores have been operating in Central Texas since 1979. Their commitment to outstanding service to their customers and community is evident and can be summed up by the company's goal, "do the right thing." The company has accomplished this goal by contributing thousands of dollars in support of the Children's Miracle Network and now by supporting student scholarships.

CEFCO Convenience Stores, is a multi-branded petroleum products marketer,

whose corporate office is located in Temple Texas. These outlets offer quality fuel as well as convenience items in a clean and safe environment. ■

Checking it out – At the CEFCO check presentation were left, Kristen Schmitt, category manager of CEFCO convenience stores and tournament director; Dennis Kelley, CEFCO vice president of marketing; Gerry Purvis, president of the MCC Foundation; Larry Lippert, CEFCO zone manager, and Diane Delk, MCC Foundation accountant.



WHERE ARE WE NOW?

By: Kathy Brookshire Director, Institutional Advancement

I am so pleased to report that it has been a great year for MCC Foundation Travel. Tanya Thompson and I just returned from Hawaii with 23 terrific travelers!

I am delighted to invite you to escape to a world of learning and adventure! All of our trips are exciting and fun.

South and boasts the 24,000 square foot Grand Spa & Salon. You will not want to miss a hydrotherapy body treatment, facial, skin care treatment, or a massage. You can step back in time and walk amongst the 200-year old live oak trees draped in moss. Enjoy afternoon tea or a

Summer 2009, come with us and discover Greece at its best. We will begin our journey in Venice, Italy, staying two nights on land before boarding Royal Caribbean's Splendour of the Seas for a seven night cruise of the Greek Isles. Landscape, history, culture, food and entertainment will keep everyone happy in Greece. Greece has magnificent archaeological ruins that span thousands of years, vivid blue skies and the azure ocean. You don't want to miss this trip.

I've said this before. The best trips are often measured not by where one wanders, but by the friendships, the relationships and the bonds that one forges once there.

We hope you can travel with us soon!

Above: Travelers enjoyed shopping in Maui.

Below: At the Hawaiian Polynesian Cultural Center in the New Zealand Village, travelers participated in the native custom of being tattooed.

One trip planned is the Savvy Gourmet Cooking School in New Orleans. I can smell Cajun delicacies coming out of the oven right now. We have made reservations for this two-day trip at the Royal Sonesta Hotel.

Our annual "Shopping Get Away" to New York City will be here before we know it. This trip includes the Rockettes Christmas Spectacular, Brunch at Tavern on the Green, Limo Tour for the day with lots of shopping, and the Broadway Show, *Legally Blonde*. Just being in New York City with the Christmas Tree at Rockefeller Center and all those window decorations is awesome!

Many of us work all the time and have lots of stress in our lives. Tanya and I wanted to offer a trip for sheer relaxation!! We chose the Grand Hotel in Point Clear, Ala. for a Spa Weekend. The Grand Hotel is one of the most beautiful resorts in the

croquet game on the lawn. Fish from the grand pier located on the property or play 18 holes of golf at the Lakewood Golf Club. Join us for the wind in our hair, sun on our faces, and something else ...happy, relaxed smiles!





TOMMY MCDONALD & C.D. SMITH

The MCC Foundation, the fund-raising arm of Meridian Community College, will have new board members joining in the circle when the group meets again.

Kathy Brookshire, executive director of the MCC Foundation and director of institutional advancement at the College, said Dr. Tommy McDonald, who retired from the College in June as vice president for operations, and C.D. Smith, who resigned from the College's board of trustees to become a board member for the state's Institutions of Higher Learning, will join the MCC Foundation Board. Former board members Bob Rea, who has served as treasurer of the foundation since its inception, and Wilbert Jones, are retiring from the board.

Both McDonald and Smith bring a world of expertise to the table. "Dr. McDonald knows the needs of the college. He can

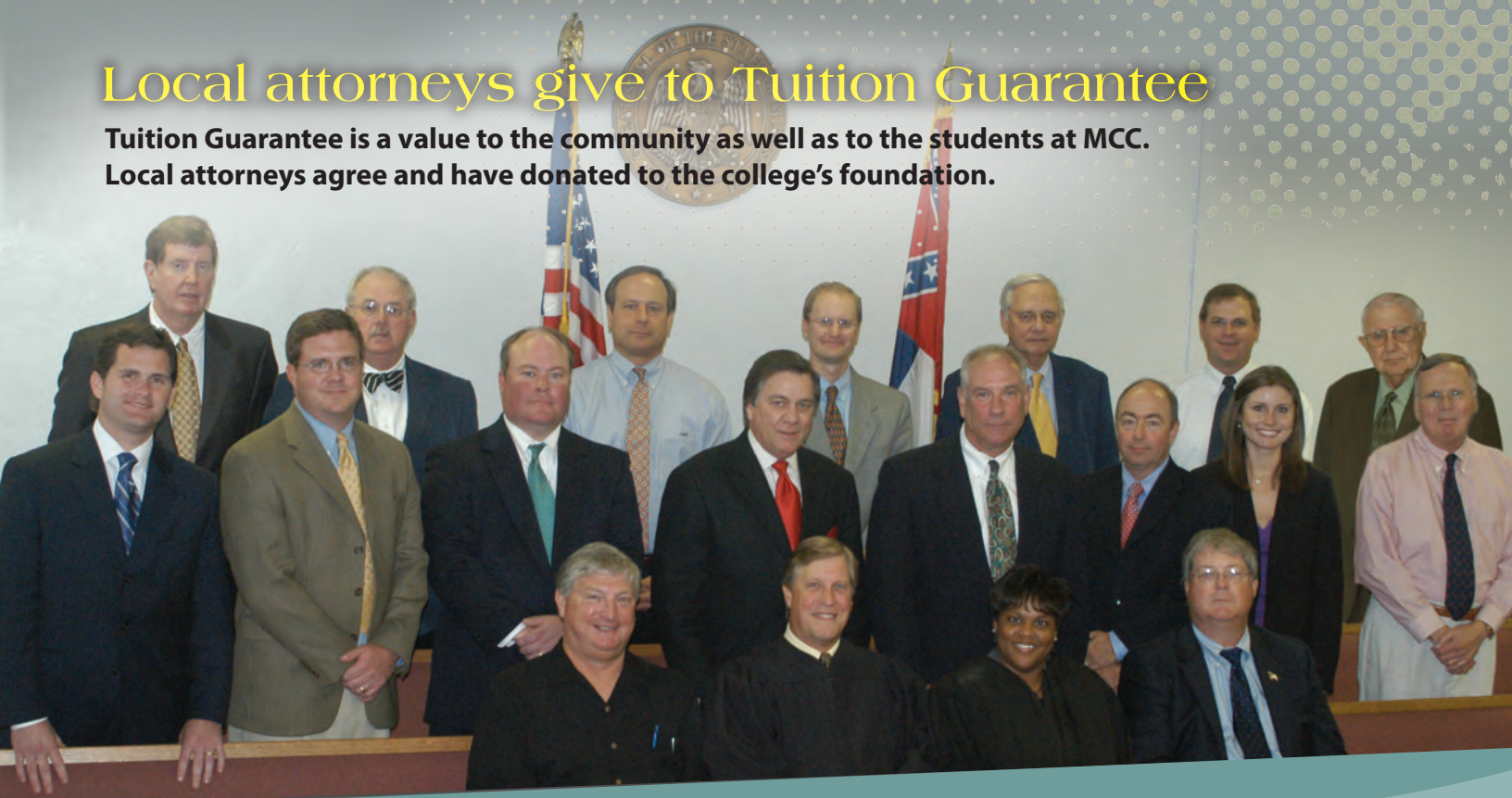
be of great benefit to the Foundation," Brookshire said. "And we're thrilled to get C.D. We are so happy he can serve on the board."

Serving as officers of the MCC Foundation are Tony Pompelia, president; Gerry Purvis, past president; Jeff McCoy, vice president; Alan Lamar, treasurer; and Brookshire, secretary.

"It's a real strong board of really smart people," Brookshire said. "(They're) very active, very involved with Tuition Guarantee and what goes on with the Foundation." ■

Local attorneys give to Tuition Guarantee

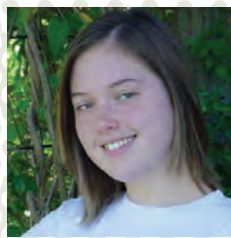
Tuition Guarantee is a value to the community as well as to the students at MCC.
Local attorneys agree and have donated to the college's foundation.



Front row, from left: Thomas Webb, Frank Coleman, Vel Young, Rick Berry. Second row: Justin Cobb, Stephen Jackson, Stewart Parrish, Robbie Jones, Bob Bresnahan, Robby Dreyfus, Kasey Bailey, Ralph Young. Back row: Bill Hammack, Charles Wright, John Compton, Will Simmons, Wink Glover, Bo Bailey, Dan Self.

Sonny Montgomery Scholarships awarded

Four students have been selected to receive the G. V. "Sonny" Montgomery Scholarships at Meridian Community College. These awards are funded through the MCC Foundation by the Board of Trustees of the G. V. "Sonny" Montgomery Foundation. It is the Board's intent to continue Congressman Montgomery's fervent commitment to education by funding these awards.



Shelby Victoria Purdy is a 2008 highest honors graduate of Southeast Lauderdale

High School. She was a member of the Fellowship of Christian Athletes, Beta Club and Students Against Destructive Decisions. Shelby was named to *Who's Who Among Students in American High Schools*. She will be taking courses in

preparation for the Associate Degree Nursing Program.



Jataria Chandalier Martin is a 2008 honor graduate of West Lauderdale High School where she was named

Outstanding Minority Student. She is one of 13 freshmen in the Medical Laboratory Technology Program at MCC. Jataria has joined the Eagle Cheerleading squad, the Medical Lab Technology Club and Health Occupation Students of America.



Courtney Smith is a 2008 highest honors graduate of Clarkdale Attendance Center. She was

a member of the cheerleading squad, Spanish Honor Society and the Dance Team.

Courtney will be taking courses in preparation for admittance in the Associate Degree Nursing Program.



Drake Nosco is a 2008 graduate of Lamar Foundation School. He played basketball and baseball for the

Raiders, was a member of the Fellowship of Christian Athletes, Beta Club, and Mu Alpha Theta. Drake will be playing basketball for the Eagles this fall. His career goal is to become a dentist. ■

A Meridian home owned and operated tradition

KIMBRELL RUFFER - roots run deep

A newspaper clipping says it all: “They keep going and going and going.” Kimbrell-Ruffer Lumber Co. has been supplying building materials to contractors and the general public for 83 years.

It was back in 1926 when Cyrus Kimbrell and Frank Ruffer created the partnership. Although Ruffer remained with the business only a short while, his name has been retained.

The Kimbrell Ruffer roots run deep; Cyrus was the great-grandfather of Bill Kimbrell, now president of the firm. Bill’s father, Royce, is chairman, and his mother, Bobbye, is vice president. In fact, Royce and Bobbye have worked together for 56 years.

The business is the only home owned and operated building material dealer in town. Still as the Meridian based company grew, so

did competition from national chains. Yet, the business continues to flourish. “We’ve prospered and grown,” said Bill, “because throughout the years we’ve operated with the timeless values of superior quality and service that customers appreciate – more than ever in today’s business climate.”

Business folk agree. Local contractor Brian Brookshire counts on Kimbrell Ruffer. He said “It’s always a family atmosphere at Kimbrell Ruffer. The service is outstanding.”

The Kimbrell family has never lost sight of the importance of its employees. “A prime reason for the company’s success and longevity is our loyal employees, several of whom have been with us for more than 50 years,” Bill said.

The company is also a contributor to the MCC Foundation as a member of the President’s Roundtable. “Your contribution directly affects students and enables them to have a better life,” said Kathy Brookshire, director of institutional advancement, as she spoke to the family members. “We help others when we can,” Miss Bobbye added. ■

Kimbrell Family – Back row, from left: Hannah Eubanks, Bill Kimbrell, Bobbye

Kimbrell, Royce Kimbrell, William Kimbrell. Front row: Payton Kimbrell, Avery Kimbrell, Alex Dubose



George Ranager



Eddy "Bear" Hester



Charles Compton



Charles Jackson



Cecile McNaughten



Joe Howard



SINCE 1926

KIMBRELL RUFFER
LUMBER COMPANY

LEADING EDGES advertising



TONY POMPELIA

When Tony Pompelia started the advertising agency Leading Edges in 2000, the company had a roster of two – Pompelia and a bookkeeper.

“We did a lot of pro bono for non-profits,” Pompelia said remembering the early days of the company while they were trying to get a foothold in the industry’s market. Today with a staff of eight, Leading Edges has clients not only in Meridian but also throughout the Southeast and international cities including Bangkok.

“We position ourselves as a full service agency,” Pompelia said, with services including audio/visual production, graphic design, marketing, media placement, strategic planning and web design and maintenance.

Still, it’s an organization in which team members rely on each other. Though it may sound like a cliché, the people who you have can make or break a business, Pompelia said. “We have people who work with us, not for us.” He credits his colleagues with experience and education. “They have a deeper understanding of their craft that allows us to offer something special to our customers.”

“I truly love the people I work with... you can’t pay them what they’re worth.”

With no two days alike, Pompelia said the business “allows you to address different opportunities each day.”

Another opportunity for Pompelia is serving as vice president of the Foundation’s board. Tony steps up to president in November. An alumnus of MCC, Pompelia sees getting involved as an example of the give-a-man-a-fish story. “It’s about this community getting an education so that they can contribute to the community,” Pompelia said.

“I see the payback to the community, to future leaders,” Pompelia said. “And, I love a great opportunity to work on something especially worth while.” ■

JEFF McCOY

Jeff McCoy knows contributing to MCC's President's Roundtable is "money well spent."

McCoy who is president and chief executive officer for Community Bank of Meridian, said "Tuition Guarantee is such a great program for the community." The bank joined the President's Roundtable – which helps to support the College's Tuition Guarantee Program – when the former president, Chuck Nicholson, felt strongly about the bank being involved.

It's a tradition McCoy feels strongly about, too. In fact, he will serve as vice president of the MCC Foundation beginning in November. "I've really enjoyed my association with the organization and getting involved. It's amazing the support and the passion for it. There are a number of business people who support and participate. Everybody sees it and wants to support it."

McCoy, who has been in the banking industry for nearly 30 years, is a native of DeKalb who joined Community Bank in 2003. "It's been a great association for me," he said, noting the bank is community and people-minded. Fellow employees take pride in their work.

"Every staff member is a stockholder; they're one of the owners in the bank," McCoy said.

Community Bank offers competitive products and services as well as a great staff of people who help grow the institution, McCoy said.

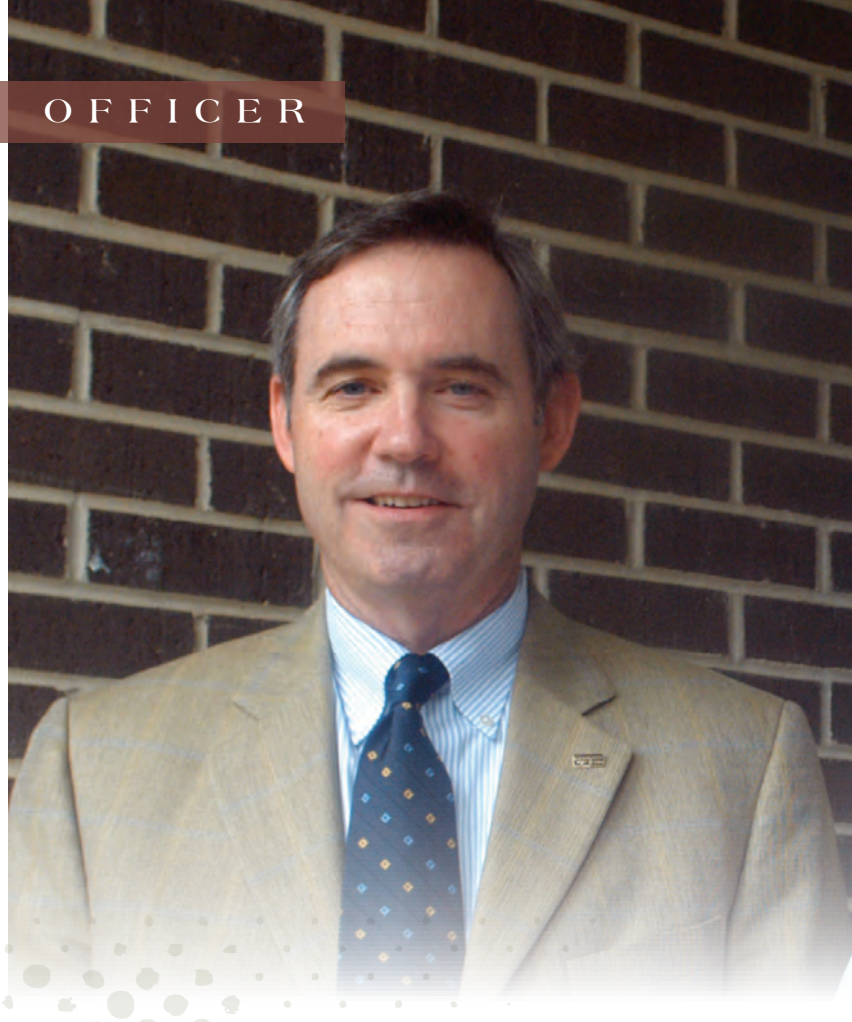
"The best part is when you realize you've helped someone." Whether it is starting a business or a problem with a checking account, lending a helping hand yields lots of emotional dividends. "You can see the satisfaction in getting the issue resolved," McCoy said.

According to the company's website, Community Bancshares of Mississippi Inc., is one of the South's fastest-growing financial institutions that did not originate in a large, metropolitan area or grow with the usual bank business plan.

Community Bancshares of Mississippi, Inc., started more than 100 years ago in a small timber community in East Central Mississippi and has grown in recent years by employing a unique approach to one of America's most routine industries.

In just over 10 years, with few acquisitions, Community Bancshares grew from \$200 million in assets and a couple of offices to more than \$2 billion in assets and 35 offices.

Over the last five years, while the corporate banking industry simultaneously morphed into insurance agents, stock brokers, and real estate agents, Community Bank has focused on simple deposit and loan services and proved that plain "vanilla" banking can be very sweet to customers, staff, and stockholders alike. ■



ALAN LAMAR

Alan Lamar sees MCC as an asset. "It really is a community college and it helps serve Meridian very well."

Lamar, who is a certified public accountant and financial adviser with USB, said he's always been impressed with MCC – from athletic programs to workforce development to Tuition Guarantee – so much that he has volunteered his time to serve on the MCC Foundation Board as treasurer.

Fellow board member, Sheryl Davidson, called on Lamar to give to the Tuition Guarantee. Upon learning about the program which gives Meridian and Lauderdale County high school graduates an opportunity to come to MCC, Lamar was sold. "After a couple of years, Kathy Brookshire (director of MCC institutional advancement) asked me to get on the board, and I've enjoyed it ever since. It's a great purpose ... helping people go to college."

An alumnus of MCC, Lamar experienced the value of getting some college credit under his belt before going on to the



GERRY PURVIS

With the slogan, "At Purvis, we give service ... not excuses," Gerry Purvis and his staff follow it to a T.

For nearly three decades, Purvis Business Machines has been embracing that way of doing business, and it has paid off. For the annual period ending in June, Purvis Business Machines was recognized as Toshiba Top Performing Dealer in the United States for its market size.

Based on sales and quota performance, the award came as a special recognition for Purvis and his staff. "Things hit right ... it worked out," he said.

Noting that this has been the best year yet for the business, Purvis said, "We never really slowed down ... and thank goodness." Aggressive purchasing and strong marketing added up for the company which is located at 4505 Highway 39 North, Meridian.

Purvis Business Machines, with its 15 employees, has a complete lineup of products and services using the latest technologies to provide solutions for businesses. Their mission statement reads "Our entire staff is committed to providing the best service possible. Total customer satisfaction is our top priority."

Purvis also puts the community and especially MCC, his alma mater, as a priority. Now completing his tenure as president of the MCC Foundation Board, Purvis is proud of the work the Foundation accomplishes and especially pleased with Tuition Guarantee. "It's been an exciting time and we've had growth," he said.

MCC holds a special place for Purvis. After serving his country in the Army, he got into the business machine business and went to MCC at night. "I wanted to do something more than servicing machines," he said, so he earned his associate degree and earned a promotion. "That empowered me and gave me the confidence," he said. ■

university level. He has degrees from both Mississippi State University and University of Mississippi. He practiced public accounting with his father and his firm merged with Rea, Shaw, Giffin and Stuart. "Bob Rea, MCC Foundation Board treasurer for numerous years, helped me get on the Foundation board, and I appreciate that," Lamar said.

Lamar joined the UBS staff in May. Their staff is committed to the community through its involvement with local and charitable organizations. "It is our belief that involvement expands our own understanding of the needs within our home and deepens our relationships. Our interest in the community will not diminish but will only grow," according to the local staff's website.

Lamar and his wife, Lou Ann, have three children, Ann Morgan, 11, and twin sons Logan and William, 7. ■



OFFICER

Trustmark, continued from page 14.

the trustee of the Hobgood Educational Trust since its inception. Over the years Trustmark has periodically reviewed the Trust and recommended changes as needed to the Lauderdale County Chancery Court. Those recommendations and subsequent changes were the result of changes in law, relevant court decisions and other pertinent circumstances.

In early 2008 Trustmark conducted its annual review of the Trust to determine whether changes could be made that would enhance the effectiveness and philanthropic impact of the Trust. As a result of this review, Trustmark took a bold and innovative step by proposing that the Hobgood Trust be merged with the Meridian Community College Foundation, and be revised in light of change in circumstances to better and effectively serve the educational needs of Lauderdale County students.

These assets are transferred to The Meridian Community College Foundation to create The T. H. and Allie R. Hobgood Educational Trust Endowment. The purpose of the new Hobgood Education Trust Endowment is to continue to provide financial aid to students who are residents of Lauderdale County, Mississippi. The policy of the new endowment is to provide student financial aid in the form of grants (instead of loans) as a part of the Meridian Community College Tuition Guarantee Program.

Trustmark National Bank-Meridian recognizes the success of the Tuition Guarantee Program of the Foundation and the impact that it has on the students of Lauderdale County, and hopes that the creation of the T. H. Hobgood and Allie R. Hobgood Endowment will serve as a catalyst for others to do the same so that someday the Tuition Guarantee program can be fully funded by endowments and allow the Foundation to utilize the funds from its annual giving campaign for the support of teachers, curricula and programs at Meridian Community College. ■

class notes



*We want to know what our alumni achievements are.
Send us your brief story. Be sure to include the years you attended or graduated.*

Let us hear from you.

Drop us a line on the web at
www.meridiancc.edu/classnotes or mail it to
Meridian Community College Connections Magazine
c/o the MCC Foundation
910 Highway 19 North, Meridian, MS 39307



910 Hwy 19 North • Meridian, MS 39307

Return Service Requested

© 2008 Meridian Community College Connections is a magazine for friends of Meridian Community College.
For more information, call 601.483.8241.

Non-Profit Org.
U.S. POSTAGE
PAID
Meridian, MS
Permit No. 628